

Bob Marley Exodus:

Table des matières

Introduction:.....	2
Tablature page 1:.....	3
Tablature page 2:.....	4
Partition page 1:.....	5
Partition page 2:.....	6
Batterie page 1:.....	7
Batterie page 2:.....	8
Batterie page 3:.....	9
Écriture batterie:.....	10
Titres disponibles:.....	11
Titres en préparation:.....	11
Conclusion:.....	11

Introduction:

À la basse un morceau assez facile, pour le rythme il y a juste quelques contretemps qu'il faudra bien mettre en place.

La batterie est un peu plus difficile, il y a beaucoup de rythmes différents sur la cymbale charleston avec un gros travail d'accentuation qui pourrait poser des problèmes aux débutants, à part ça sur pratiquement toute la durée du morceau la grosse caisse est jouée sur tous les temps et la rim-shot uniquement sur le 3ème temps (c'est classique pour ce genre de musique).

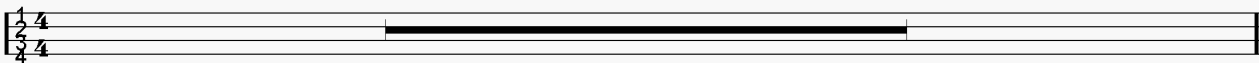
Voici le lien pour écouter le morceau:

[Bob Marley Exodus](#)

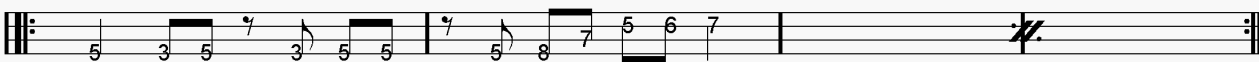
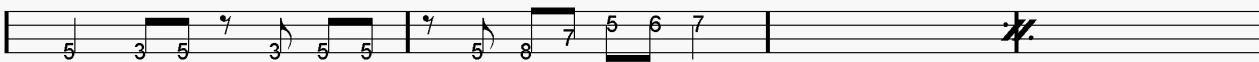
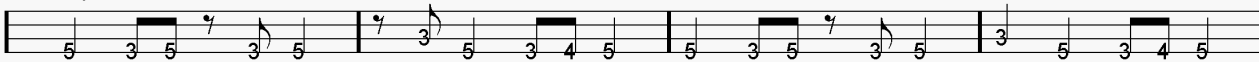
Bon courage à tous !

Tablature page 1:

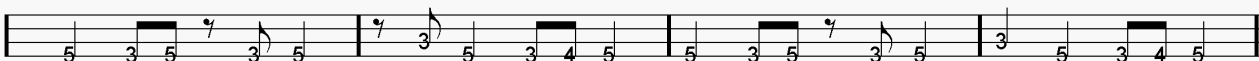
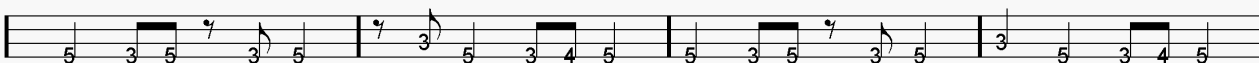
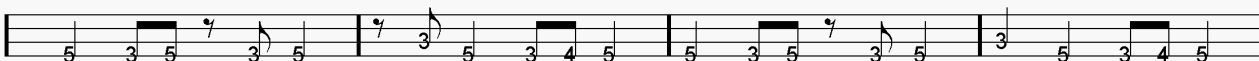
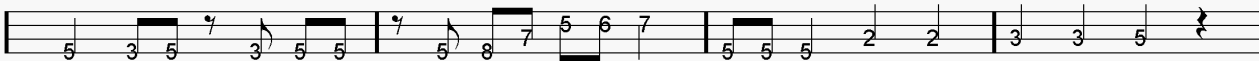
Intro = 12 mesures sans basse



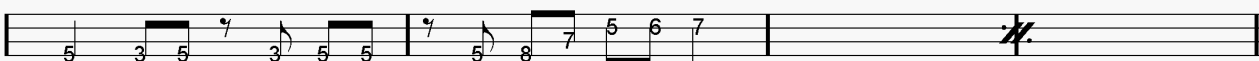
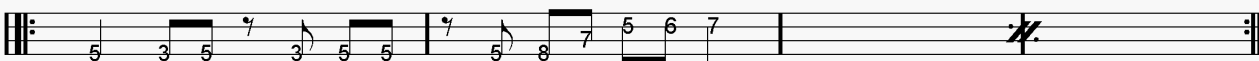
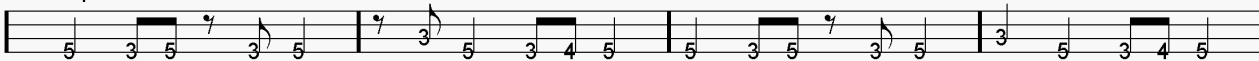
Couplet 1



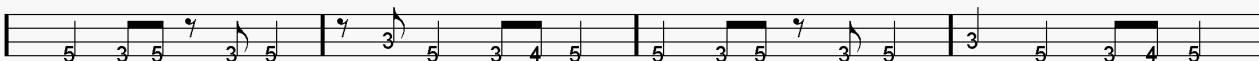
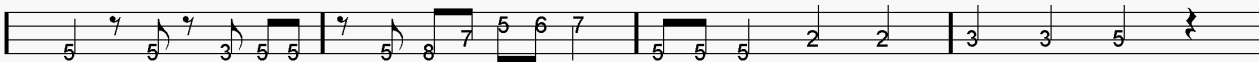
Refrain 1



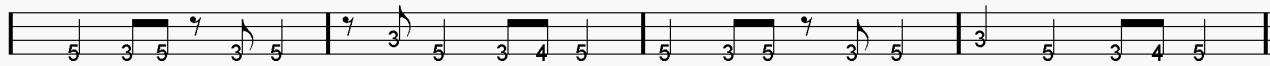
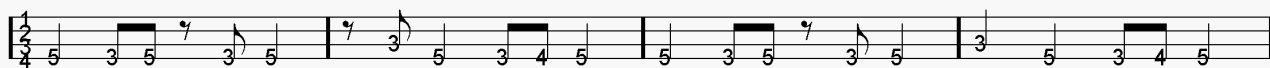
Couplet 2



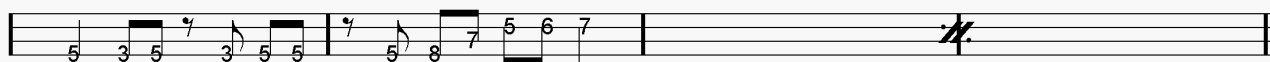
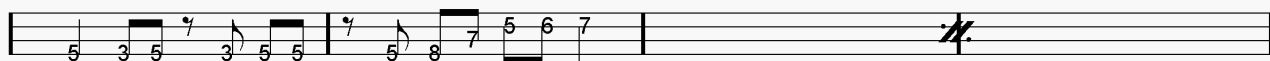
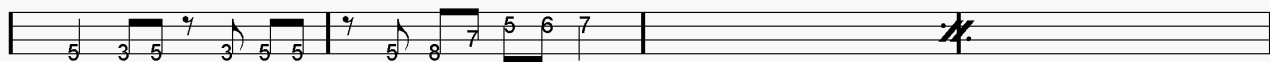
Refrain 2



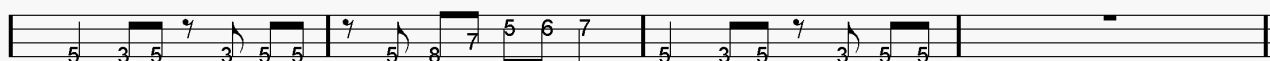
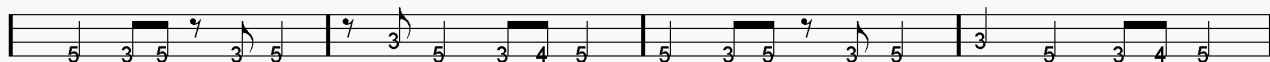
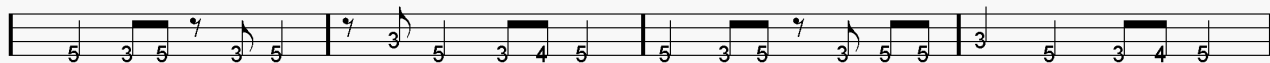
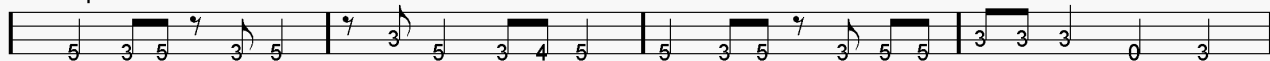
Tablature page 2:



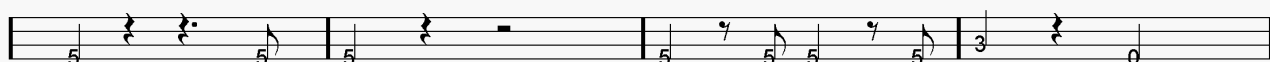
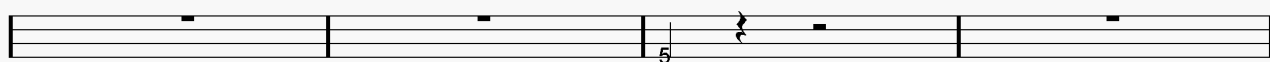
Pont 1



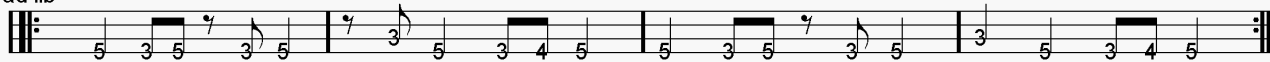
Couplet 3



Pont 2

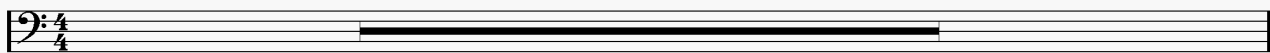


ad lib Final



Partition page 1:

Intro = 12 mesures sans basse



Couplet 1



Refrain 1



Couplet 2

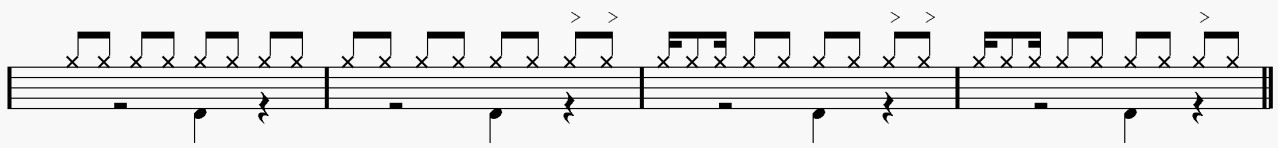
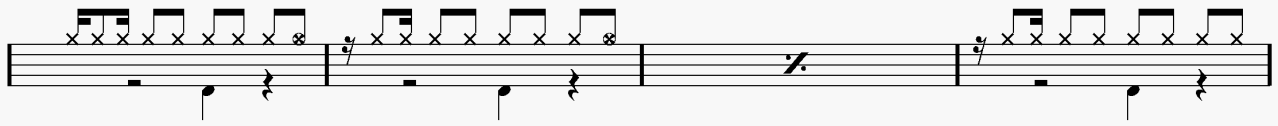
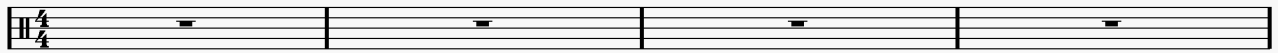


Refrain 2

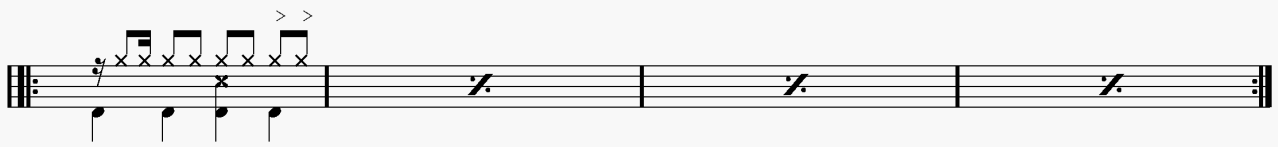
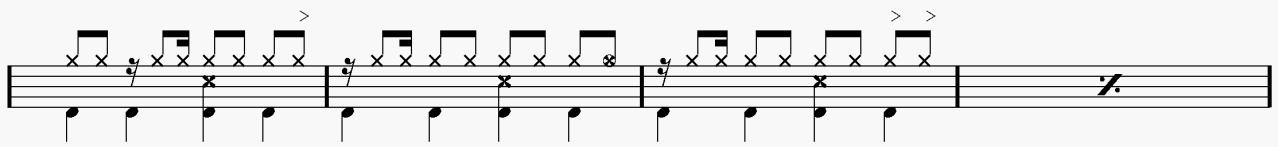
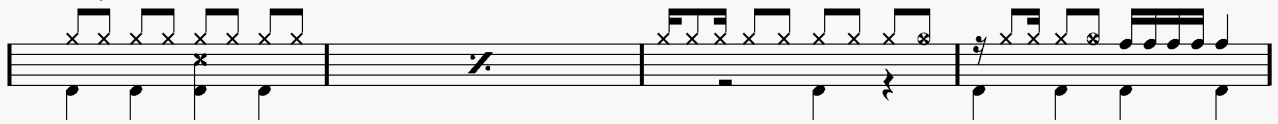


Batterie page 1:

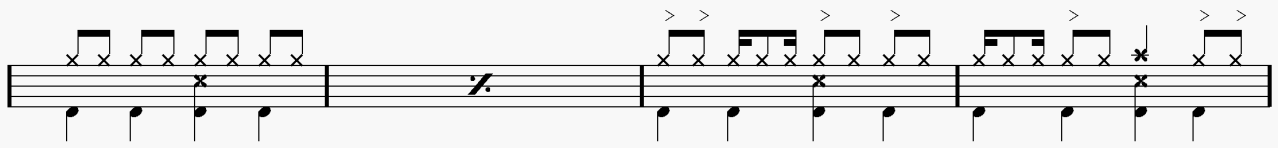
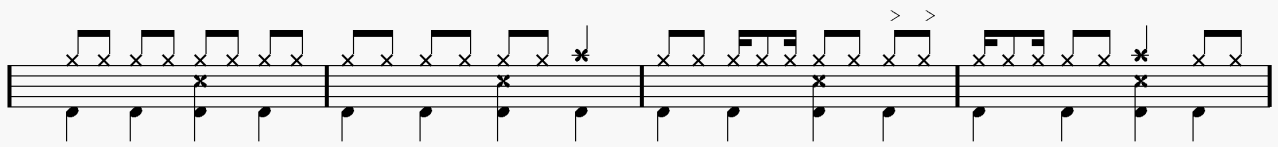
♩ = 136
Intro



Couplet 1



Refrain 1



Batterie page 2:

A musical staff with a treble clef and a key signature of one sharp (F#). The notation consists of a sequence of eighth notes, each with an 'x' above it and an accent (>) above the note. The notes are grouped in pairs. The staff ends with a double bar line and a repeat sign.

Couplet 2

A musical staff with a treble clef and a key signature of one sharp (F#). The notation consists of eighth notes with 'x' and accents. The first measure has four notes, followed by a double bar line and a repeat sign. The second measure has four notes, followed by a double bar line and a repeat sign. The third measure has four notes, followed by a double bar line and a repeat sign. The fourth measure has four notes, followed by a double bar line and a repeat sign.

A musical staff with a treble clef and a key signature of one sharp (F#). The notation consists of eighth notes with 'x' and accents. The staff starts with a double bar line and a repeat sign. It contains two measures of four notes each, followed by a double bar line and a repeat sign. The staff ends with a double bar line and a repeat sign.

A musical staff with a treble clef and a key signature of one sharp (F#). The notation consists of eighth notes with 'x' and accents. The staff starts with a double bar line and a repeat sign. It contains four measures of four notes each, each followed by a double bar line and a repeat sign.

Refrain 2

A musical staff with a treble clef and a key signature of one sharp (F#). The notation consists of eighth notes with 'x' and accents. The staff starts with a double bar line and a repeat sign. It contains two measures of four notes each, followed by a double bar line and a repeat sign. The third measure has four notes, followed by a double bar line and a repeat sign. The fourth measure has four notes, followed by a double bar line and a repeat sign.

A musical staff with a treble clef and a key signature of one sharp (F#). The notation consists of eighth notes with 'x' and accents. The staff contains four measures of four notes each, each followed by a double bar line and a repeat sign.

A musical staff with a treble clef and a key signature of one sharp (F#). The notation consists of eighth notes with 'x' and accents. The staff contains four measures of four notes each, each followed by a double bar line and a repeat sign.

A musical staff with a treble clef and a key signature of one sharp (F#). The notation consists of eighth notes with 'x' and accents. The staff contains four measures of four notes each, each followed by a double bar line and a repeat sign.

Pont 1

A musical staff with a treble clef and a key signature of one sharp (F#). The notation consists of eighth notes with 'x' and accents. The staff contains four measures of four notes each, each followed by a double bar line and a repeat sign.

Batterie page 3:

First musical staff with rhythmic notation. It features a series of eighth notes with 'x' marks above them, indicating specific drum hits. The notation is spread across four measures.

Second musical staff with rhythmic notation, similar to the first staff, consisting of eighth notes with 'x' marks above them across four measures.

Couplet 3

Third musical staff, labeled 'Couplet 3'. It includes rhythmic notation with 'x' marks and accents (>) above notes. The notation spans four measures.

Fourth musical staff with rhythmic notation, including 'x' marks and accents, spanning four measures.

Fifth musical staff with rhythmic notation, including 'x' marks and accents, spanning four measures.

Sixth musical staff with rhythmic notation, including 'x' marks and accents, spanning four measures.

Pont 2



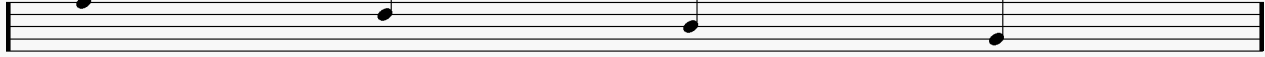
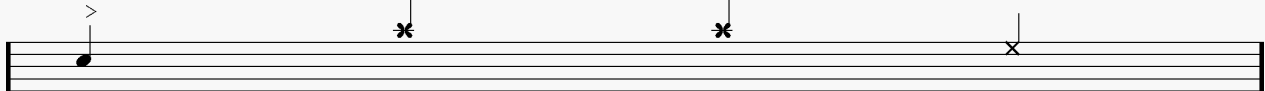

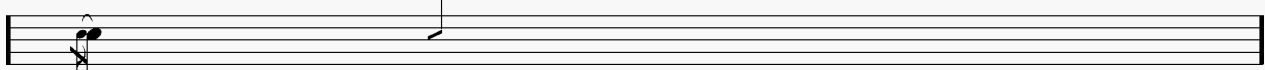
Seventh musical staff, labeled 'Pont 2'. It features rhythmic notation with 'x' marks and accents, spanning four measures.

Eighth musical staff with rhythmic notation, including 'x' marks and accents, spanning four measures.

Final

Ninth musical staff, labeled 'Final'. It begins with 'ad lib' and contains rhythmic notation with 'x' marks and accents, spanning four measures.

Écriture batterie:

bd 1	bd 2	rim-shot	sd
			
HH Pied	HH fermée	HH entrouverte	HH ouverte
			
tom 1	tom 2	tom 3	tom 4
			
accent	note mutée	crash	cloche
			
ride	dôme de cymbale	chinoise	splash
			
fla	note muette		
			

Titres disponibles:

Cliquez sur ce lien pour voir la liste des titres disponibles:

[titres disponibles](#)

Titres en préparation:

Cliquez sur ce lien pour voir la liste des titres en préparation:

[titres en préparation](#)

Conclusion:

Si vous souhaitez faire des commentaires sur ce dossier vous pouvez me contacter sur ma messagerie: emmanuel.somenzi@free.fr