

Billy Idol White Wedding (part 1):

Table des matières

Introduction:.....	2
Tablature basse page 1:.....	3
Tablature basse page 2:.....	4
Partition basse page 1:.....	5
Partition basse page 2:.....	6
Partition batterie page 1:.....	7
Partition batterie page 2:.....	8
Écriture batterie:.....	9

Introduction:

Une ligne de basse très répétitive, les seules difficultés sont les accents.

Pour la partition de basse il y a un dièse à la clef: le Fa#.

La partie de batterie est très répétitive également, les seules difficultés sont les breaks.

Voici le lien pour écouter le morceau:

[Billy Idol White Wedding \(part 1\)](#)

Bon courage à tous !

Tablature basse page 1:

Billy Idol White Weddind (Part 1)

Intro Guitare Intro

1 2

6

10

14

Couplets 1 / 2

18

22

26

29

Refrains 1 / 2

32

36

40

2. Instrumental

68

Tablature basse page 2:

Solo guitare



72

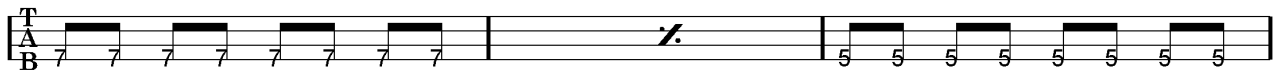
Pont



80



84

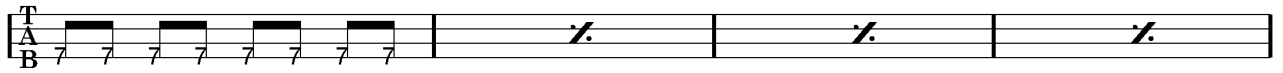


88

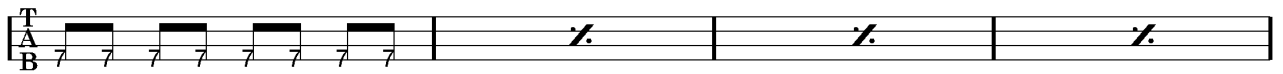


91

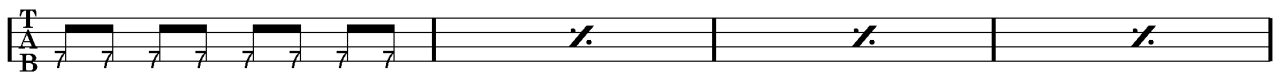
Couplet 3



94



98

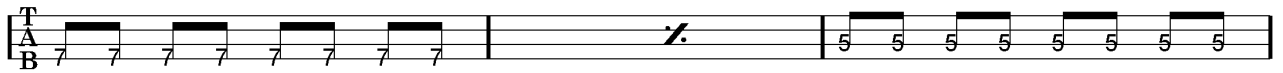


102



106

Refrain 3

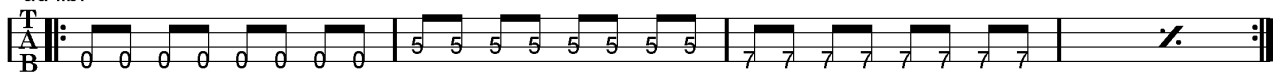


110



113

ad lib.



116

Partition basse page 1:

Billy Idol White Weddind (Part 1)

Intro Guitare

Intro

1 2

6

10

14

Couplets 1 / 2

18

22

26

29

Refrains 1 / 2

32

36

40

2. Instrumental

68

Partition batterie page 1:

Billy Idol White Weddind (Part 1)

♩ = 129

Intro

Intro guitare

Musical notation for the Intro section, measures 1-14. The notation is on a single staff with a treble clef and a 4/4 time signature. It features a series of eighth notes with 'x' marks above them, indicating a specific drum pattern. Measure 1 starts with a double bar line and a first ending bracket. Measure 2 has a second ending bracket. Measures 14 and 15 include a drum solo section with a 'z' symbol above the notes.

Couplets 1 / 2

Musical notation for the Couplets section, measures 18-29. The notation is on a single staff with a treble clef and a 4/4 time signature. It features a series of eighth notes with 'x' marks above them. Measures 18-28 include a drum solo section with a 'z' symbol above the notes. Measure 29 includes a drum solo section with a 'z' symbol above the notes.

Refrains 1 / 2

Musical notation for the Refrains section, measures 32-40. The notation is on a single staff with a treble clef and a 4/4 time signature. It features a series of eighth notes with 'x' marks above them. Measure 32 starts with a double bar line and a first ending bracket. Measure 36 has a second ending bracket. Measure 40 includes a drum solo section with a 'z' symbol above the notes.

Partition batterie page 2:

Instrumental

Musical notation for the Instrumental part, measures 68-71. The staff shows a series of eighth notes with 'x' marks above them, indicating a specific rhythmic pattern. Measure 68 starts with an asterisk (*). The notation includes stems, beams, and rests.

Solo guitare

Musical notation for the Solo guitare part, measures 72-75. The staff shows a series of eighth notes with 'x' marks above them. Measure 72 starts with an asterisk (*). There are first and second endings indicated by '1.' and '2.' above the staff.

Pont

Musical notation for the Pont part, measures 80-79. The staff shows a series of eighth notes with 'x' marks above them. Measure 80 starts with an asterisk (*). The notation includes stems, beams, and rests.

Musical notation for the Pont part, measures 84-83. The staff shows a series of eighth notes with 'x' marks above them. Measure 84 starts with an asterisk (*). There is a double bar line with a slash (/) in measure 83.

Musical notation for the Pont part, measures 88-87. The staff shows a series of eighth notes with 'x' marks above them. Measure 88 starts with an asterisk (*). The notation includes stems, beams, and rests.

Musical notation for the Pont part, measures 91-90. The staff shows a series of eighth notes with 'x' marks above them. Measure 91 starts with an asterisk (*). The notation includes stems, beams, and rests.

Couplet 3

Musical notation for the Couplet 3 part, measures 94-93. The staff shows a series of eighth notes with 'x' marks above them. Measure 94 starts with '3x' and an asterisk (*). There are double bar lines with slashes (/) in measures 93 and 92.

Musical notation for the Couplet 3 part, measures 106-105. The staff shows a series of eighth notes with 'x' marks above them. Measure 106 starts with an asterisk (*). The notation includes stems, beams, and rests.

Refrain 3

Musical notation for the Refrain 3 part, measures 110-109. The staff shows a series of eighth notes with 'x' marks above them. Measure 110 starts with an asterisk (*). The notation includes stems, beams, and rests.

Musical notation for the Refrain 3 part, measures 113-112. The staff shows a series of eighth notes with 'x' marks above them. Measure 113 starts with an asterisk (*). There is a double bar line with a slash (/) in measure 112.

ad lib.

Musical notation for the ad lib. part, measures 116-115. The staff shows a series of eighth notes with 'x' marks above them. Measure 116 starts with an asterisk (*). There are double bar lines with slashes (/) in measures 115 and 114.

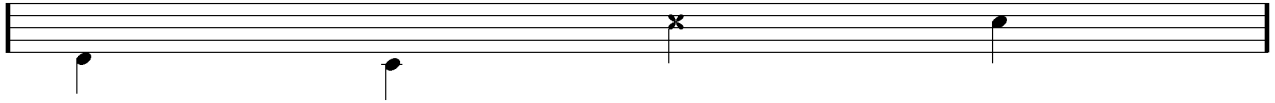
Écriture batterie:

bd 1

bd 2

rim-shot

sd

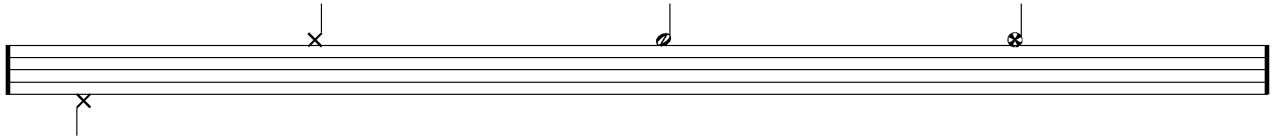


HH Pied

HH fermée

HH entrouverte

HH ouverte

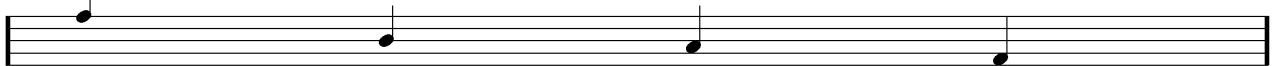


tom 1

tom 2

tom 3

tom 4

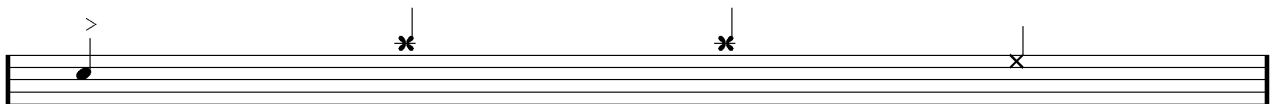


accent

note mutée

crash

cloche

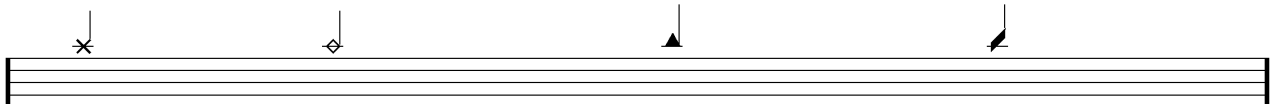


ride

dôme de cymbale

chinoise

splash



flas

note muette

