

AC/DC Sin City:

**Table des matières**

Introduction:.....2  
Tablature basse page 1:.....3  
Tablature basse page 2:.....4  
Partition basse page 1:.....5  
Partition basse page 2:.....6  
Partition batterie page 1:.....7  
Partition batterie page 2:.....8  
Écriture batterie:.....9

### **Introduction:**

Une ligne de basse plus difficile qu'on pourrait le penser, c'est surtout le placement rythmique des accents et les syncopes qui sont le plus compliqué à mettre en place, les autres difficultés sont les contretemps, les glissés et les doubles notes (si vous n'arrivez pas à jouer les deux notes en même temps jouez uniquement la note la plus grave).

Même chose pour la partie de batterie, les principales difficultés sont les contretemps à la grosse caisse, les flas, les breaks en sextolets et les syncopes sur la cymbale crash. J'ai ajouté la charleston fermée pendant l'intro 1 et à la fin du pont (mesures 109 à 116) qui n'est pas jouée dans la version studio mais qui est jouée en live.

Voici le lien pour écouter le morceau:

[AC/DC Sin City](#)

Bon courage à tous !

**Tablature basse page 1:**

AC/DC Sin City

Intro 1

1

4

8

Intro 2

12

19

4x Couplet 1

23

Pré-Refrain 1

39

43

3x Refrain 1

47

59

62

# Tablature basse page 2:

3x Solo guitare

66

78

81

Pont

85

5x

105

109

3x

115

Pré-Refrain 2

117

121

Refrain 2

125

3x

137

Final

140

Ralenti.....

# Partition basse page 1:

## AC/DC Sin City

### Intro 1

Musical notation for Intro 1, measures 1-8. The first staff (measures 1-2) is in 3/4 time, and the second staff (measures 3-8) is in 4/4 time. The notation includes eighth and quarter notes, rests, and a double bar line with repeat dots.

### Intro 2

Musical notation for Intro 2, measures 12-18. The first staff (measures 12-18) shows a sequence of eighth notes with repeat signs. The second staff (measures 19-18) shows a sequence of eighth notes with accents (>) above them.

### 4x Couplet 1

Musical notation for 4x Couplet 1, measures 23-28. The first staff (measures 23-28) shows a sequence of eighth notes with repeat signs.

### Pré-Refrain 1

Musical notation for Pré-Refrain 1, measures 39-43. The first staff (measures 39-43) shows a sequence of eighth notes with repeat signs. The second staff (measures 43-43) shows a sequence of eighth notes.

### 3x Refrain 1

Musical notation for 3x Refrain 1, measures 47-62. The first staff (measures 47-62) shows a sequence of eighth notes with repeat signs. The second staff (measures 59-62) shows a sequence of eighth notes with repeat signs. The third staff (measures 62-62) shows a sequence of eighth notes with accents (>) above them.

# Partition basse page 2:

3x Solo guitare

66

78

81

5x Pont

85

105

3x

109

115

117 Pré-Refrain 2

117

121

3x Refrain 2

125

137

Final

140

Ralenti.....

# Partition batterie page 1:

## AC/DC Sin City

♩ = 125

Intro 1

Musical notation for Intro 1, measures 1-8. The piece is in 3/4 time. Measure 1 is marked with a '1' in a box. Measures 2-8 contain various drum patterns including snare, hi-hat, and cymbal hits, with some notes marked with an asterisk (\*).

Intro 2

Musical notation for Intro 2, measures 12-19. The piece is in 3/4 time. Measure 12 is marked with a '12' in a box. Measures 13-19 contain a complex drum pattern with many notes marked with an asterisk (\*).

Couplet 1

Musical notation for Couplet 1, measures 23-24. Measure 23 is marked with a '23' in a box and '4x' above it. Measures 23-24 contain a drum pattern with notes marked with an asterisk (\*).

Pré-Refrain 1

Musical notation for Pré-Refrain 1, measures 39-40. Measure 39 is marked with a '39' in a box. Measures 39-40 contain a drum pattern with notes marked with an asterisk (\*). Measure 40 has two endings: '1.' and '2.'.

Refrain 1

Musical notation for Refrain 1, measures 47-62. Measure 47 is marked with a '47' in a box and '3x' above it. Measures 47-62 contain a drum pattern with notes marked with an asterisk (\*). Measure 62 has a triplet of notes marked with a '3' above them.

# Partition batterie page 2:

## Solo Guitare

3x

66

78

81

## Pont

85

93

109

113

## Pré-Refrain 2

117

## Refrain 2

3x

125

137

## Final

140

143

Ralenti.....



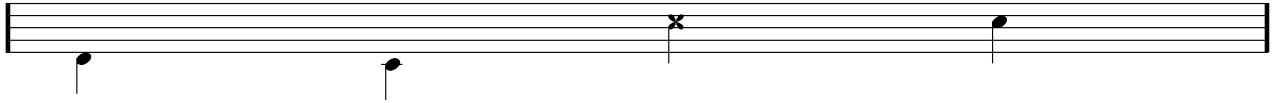
## Écriture batterie:

bd 1

bd 2

rim-shot

sd

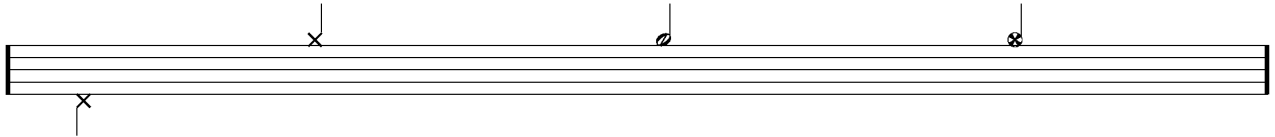


HH Pied

HH fermée

HH entrouverte

HH ouverte

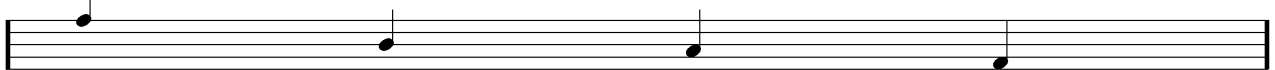


tom 1

tom 2

tom 3

tom 4

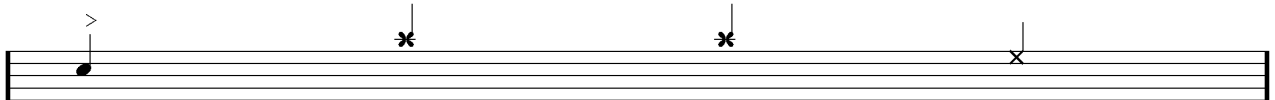


accent

note mutée

crash

cloche

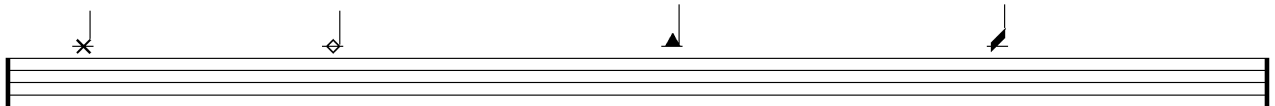


ride

dôme de cymbale

chinoise

splash



flas

note muette

