

AC/DC Highway To Hell:

Table des matières

Introduction:.....2
Tablature basse version 1:.....3
Tablature basse version 2 page 1 :.....4
Tablature basse version 2 page 2:.....5
Partition basse version 1:.....6
Partition basse version 2 page 1:.....7
Partition basse version 2 page 2:.....8
Partition batterie page 1:.....9
Partition batterie page 2:.....10
Écriture batterie:.....11

Introduction:

Un des titres les plus connus du groupe AC/DC.

Pour la basse le rythme ne comporte que des noires et des croches. Il y a juste un travail d'accentuation, deux syncopes à effectuer sur le pont et des crescendos.

Notez qu'il y a 2 versions pour la partition et la tablature de basse:

La version 1 tient sur une page mais les mesures ne sont pas numérotées.

Dans la version 2 les mesures sont numérotées mais il y a deux pages.

Pour la partition il y a 1 seul dièse à la clef: le Fa#

Pour la batterie c'est un titre assez simple à jouer (c'est souvent la cas chez AC/DC) il y a juste les breaks en crescendo avant les refrains et quelques mises en place rythmique caisse claire + crash à effectuer sur le pont mais rien de très compliqué.

Voici le lien pour écouter le morceau:

[AC/DC Highway To Hell](#)

Bon courage à tous !

Tablature basse version 2 page 1 :

AC/DC Highway To Hell

Intro 1

Musical notation for Intro 1, measures 1-2. The notation is on a single staff with a 4/4 time signature. Measure 1 contains a single eighth note on the 7th fret. Measure 2 contains a single eighth note on the 2nd fret. The piece ends with a double bar line.

Intro 2

Musical notation for Intro 2, measure 6. The notation is on a single staff with a single eighth note on the 6th fret. The piece ends with a double bar line.

Couplets 1 et 2

Musical notation for Couplets 1 et 2, measure 10. The notation is on a single staff with a single eighth note on the 10th fret. The piece ends with a double bar line.

Musical notation for Couplets 1 et 2, measure 15. The notation is on a single staff with a single eighth note on the 15th fret. The piece ends with a double bar line.

Musical notation for Couplets 1 et 2, measure 19. The notation is on a single staff with a single eighth note on the 19th fret. The piece ends with a double bar line.

Musical notation for Couplets 1 et 2, measure 23. The notation is on a single staff with a single eighth note on the 23rd fret. The piece ends with a double bar line.

Refrains 1 et 2

Musical notation for Refrains 1 et 2, measure 27. The notation is on a single staff with a sequence of notes: 5, 5, 5, 5, 5, 5, 5, 4. The piece ends with a double bar line.

Musical notation for Refrains 1 et 2, measure 31. The notation is on a single staff with a sequence of notes: 5, 5, 5, 5, 5, 5, 5, 7, 5, 5, 5, 5, 5, 5, 5, 5, 5. The piece ends with a double bar line.

Musical notation for Refrains 1 et 2, measure 53. The notation is on a single staff with a sequence of notes: 5, 5, 5, 5, 5, 5, 5, 7, 5, 5, 5, 5, 5, 5, 5. The piece ends with a double bar line.

Partition basse version 1:

Intro

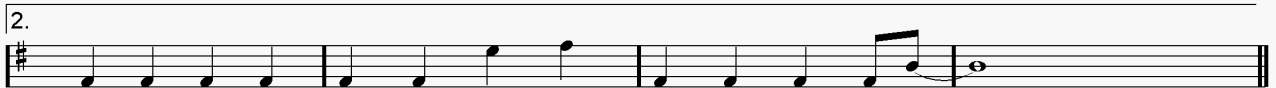
Couplets 1 et 2

8 mesures sans basse

15 mesures sans basse



Refrains 1 et 2



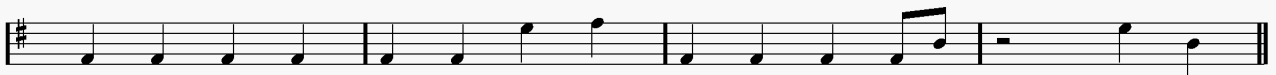
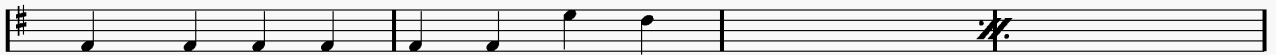
Pont



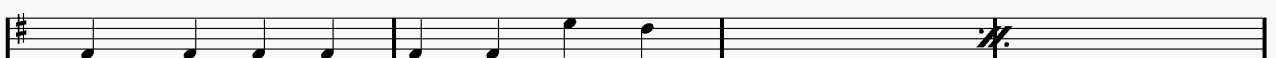
Chorus



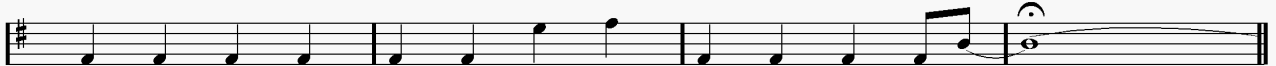
Refrain 3



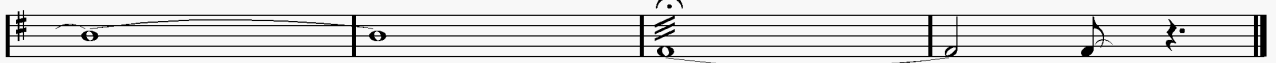
Refrain 4



ralentir



Fin



Partition basse version 2 page 1:

AC/DC Highway To Hell

Intro 1



1

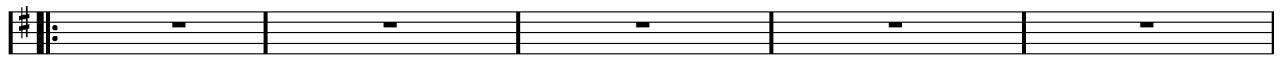
2

Intro 2



6

Couplets 1 et 2



10



15



19



23

Refrains 1 et 2



27



31



53

Partition basse version 2 page 2:

Pont

57

Chorus

61

65

Refrain 3

69

73

Refrain 4

77

Ralenti

81

Fin

85

Partition batterie page 1:

AC/DC Highway To Hell

♩ = 118

Intro 1

1 2

Musical notation for measures 1 and 2. Measure 1 contains a single eighth rest. Measure 2 contains a quarter rest. Measures 3, 4, and 5 are empty. Measure 6 contains three eighth notes with 'x' marks above them.

Intro 2

6

Musical notation for measures 6 and 7. Measure 6 contains four eighth notes with 'x' marks above them. Measure 7 contains a slash. Measures 8 and 9 contain four eighth notes with 'x' marks above them. Measure 10 contains a slash.

Couplets 1 et 2

10

Musical notation for measures 10 through 14. Measure 10 contains four eighth notes with 'x' marks above them. Measures 11, 12, 13, and 14 each contain a slash.

15

Musical notation for measures 15 through 18. Measure 15 contains four eighth notes with 'x' marks above them. Measures 16, 17, and 18 each contain a slash.

19

Musical notation for measures 19 through 22. Measure 19 contains four eighth notes with 'x' marks above them. Measures 20, 21, and 22 each contain a slash.

23

Musical notation for measures 23 through 26. Measure 23 contains four eighth notes with 'x' marks above them. Measure 24 contains a slash. Measures 25 and 26 contain eighth notes with a 'v' mark above the first note of measure 25.

Refrains 1 et 2

27

Musical notation for measures 27 through 30. Measures 27, 28, 29, and 30 contain eighth notes with asterisks above them.

1.

31

Musical notation for the first ending of the refrain, measures 31 through 34. Measures 31, 32, 33, and 34 contain eighth notes with asterisks above them.

2.

53

Musical notation for the second ending of the refrain, measures 53 through 56. Measures 53, 54, 55, and 56 contain eighth notes with asterisks above them.

Partition batterie page 2:

Pont

57

Chorus

61

65

Refrain 3

69

73

Refrain 4

77

81

Ralenti

Fin

85

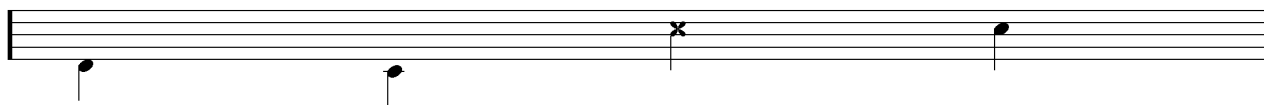
Écriture batterie:

bd 1

bd 2

rim-shot

sd

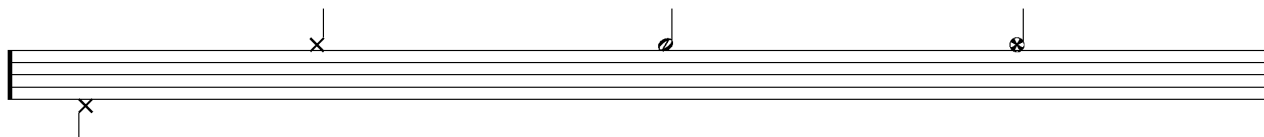


HH Pied

HH fermée

HH entrouverte

HH ouverte

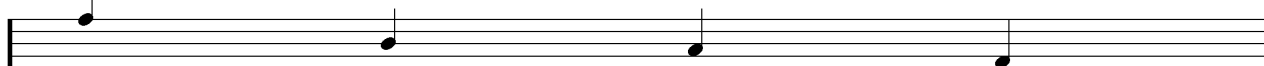


tom 1

tom 2

tom 3

tom 4

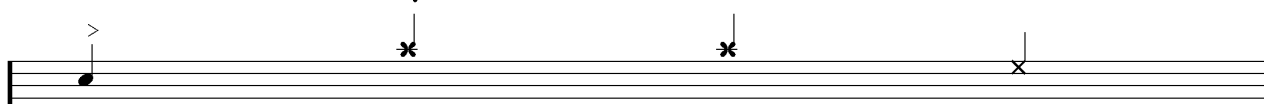


accent

note mutée

crash

cloche

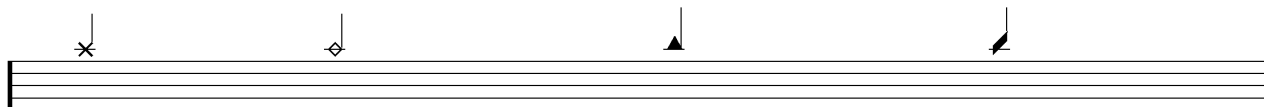


ride

dôme de cymbale

chinoise

splash



flas

note muette

